



SOUNDPROOFING
WASTE PIPES

TECSOUND® TUBE



TECSOUND® TUBE



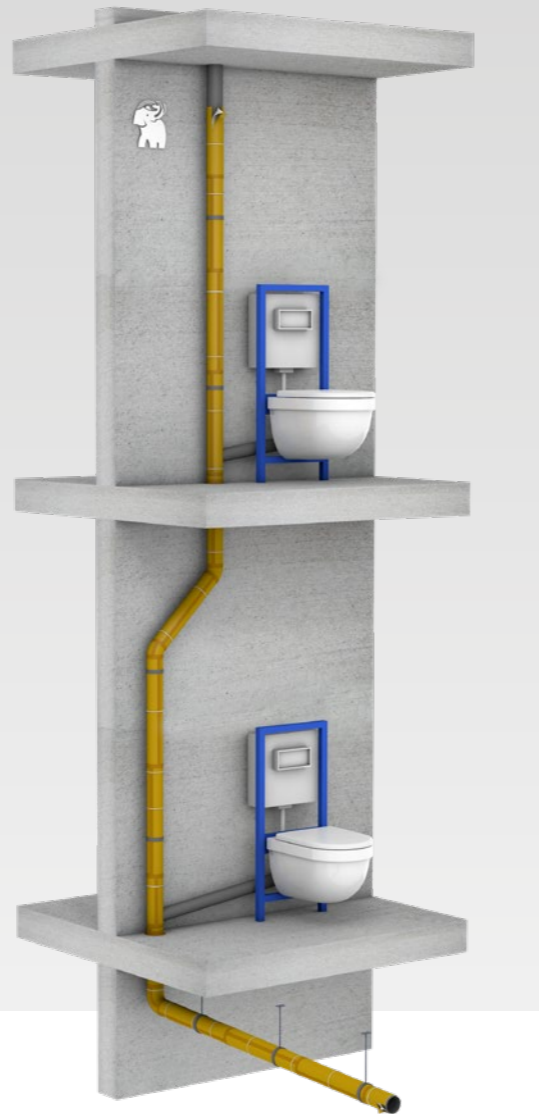
Tecsound® Tube is a soundproofing complex made out of Tecsound membrane bonded to a non-woven porous polyester fleece.

Tecsound® Tube is specially designed for :

Soundproofing of waste water pipes (tertiary and residential buildings).

Vibration damping and structural noise attenuation.

Tecsound® Tube is suitable to soundproof all type of pipes: PVC, fiber cement, metal.



TECSOUND® TUBE

- Thickness → 4,75 mm
- Dimension of roll → 8 x 0,4 m
- Roll per pallet → 40

Sales unit : roll.
Vertically placed on pallet.

ACCESSORY

Tecsound® S50 Band 50



The +

- Low thickness helps installation.
- Suitable for new and refurbishment jobs.
- Does not crack or break at low temperatures.
- Practical use: suitable for use in confined spaces, flexible and adaptable to elbows and branches.
- Excellent ageing resistance.
- Easy to handle and cut.
- Easy and quick installation directly on the drain pipe.
- High performance : significant reduction of airborne and impact noise.



Information on the level of emission of volatile substances in indoor air, presenting a risk of toxicity by inhalation, on a class scale ranging from A+ (very low emissions) to C (high emissions).

INSTALLATION GUIDELINES

- Cut the roll at the desired length not exceeding 1 meter. If the diameter is below 100 mm, cut the roll crosswise at the pipe diameter providing further 50 mm for the overlaps.
- Wrap the Tecsound® Tube with the polyester felt side around the pipe. In case of refurbishment, pipe clamps must be open to allow a continuous insulation of the pipe.
- Fasten the product using cable ties every 30-40 cm.
- Seal overlaps and joints using Tecsound® S50 Band 50.
- Apply Tecsound S50 Band 50 to elbows to improve impact noise damping. Apply the adjoining pieces butt joined without leaving any gaps.

Warnings

- In case of refurbishment, start the installation of the Tecsound Tube from the pipe clamps. Calculate the number of pieces needed.
- If new job, please ensure that the pipe clamps are big enough to embrace the soundproofing solution.



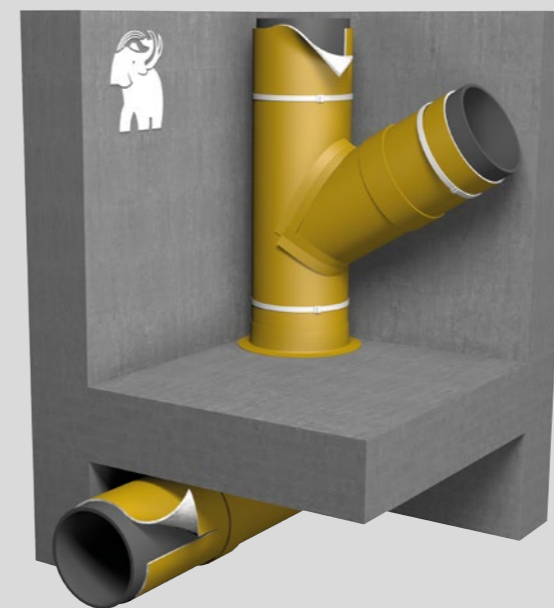
Acoustic performance

Soundproofing Solution performance Index

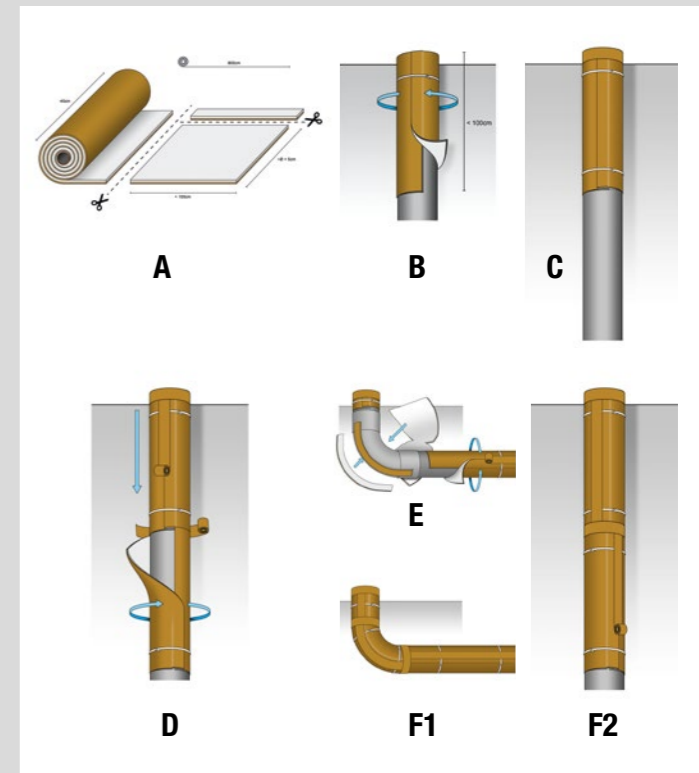
Insertion loss factor (IL_{a,A}) :

Measured in dB(A), defines the acoustic performance following EN 14366 (2005) of the insulation wrapped around a 100 mm PVC waste water pipe.

The higher the IL_{a,A}, the better the insulation.



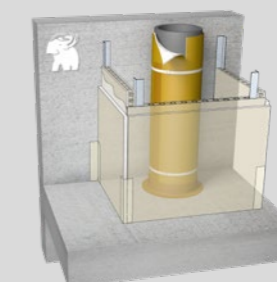
Characteristics	Value
Flow	2,0 l/s
Airborne noise L _{an} bare PVC pipe	55
Airborne noise L _{an} PVC + Tecsound Tube	41
Acoustic insulation - Insertion loss of airborne noise (IL_{a,A})	14



Acoustic performance of the pipe technical shafts

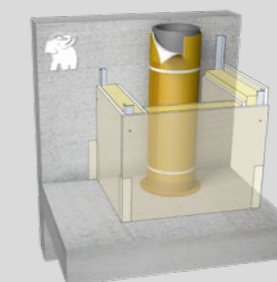
Airborne noise pressure level L_{an} and structural noise L_{sc} measured in dB (A) of the waste water pipe L_{nAT} radiated in a room = L_{an} + L_{sc}.

The lower L_{nAT}, smaller is the noise emission.



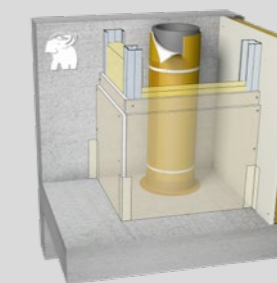
Honeycomb partition 50 mm

Characteristics	Bare PVC	PVC + Tecsound TUBE
Straight vertical pipe	36	23
Straight pipe with 45° deflection	44	33
Horizontal pipe	41	28



Lightweight partition with mineral wool

Characteristics	Bare PVC	PVC + Tecsound TUBE
Straight vertical pipe	25	18
Straight pipe with 45° deflection	35	26
Horizontal pipe	29	20



1/2 partition, 2 plasterboard standard with mineral wool

Characteristics	Bare PVC	PVC + Tecsound TUBE
Straight vertical pipe	24	16
Straight pipe with 45° deflection	34	25
Horizontal pipe	28	18



SOPREMA Group at your service

Looking for a sales contact ?

Contact our Customer Service

☎ **33(0)3 88 02 11 79**

All the information is available in our website

www.soprema.fr

www.tecsound.fr

contact@soprema.fr

contact@tecsound.fr

Agissez pour
le recyclage des
papiers avec
SOPREMA SAS
et Ecofolb.



SOPREMA SAS AU CAPITAL DE 50 000 000 €. SIEGE SOCIAL : 14 RUE DE SAINT-NAZAIRE - 67100 STRASBOURG.

ADRESSE POSTALE : CS 60121 - 67025 STRASBOURG CEDEX - FRANCE – TEL. : +33 3 88 79 84 00 - FAX : +33 3 88 79 84 01. RCS STRASBOURG : 314 527 557.

SOPREMA se réserve, en fonction de l'évolution des connaissances et des techniques, de modifier sans préavis la composition et les conditions d'utilisation de ses matériaux donc subséquemment leur prix.
En conséquence toute commande ne sera acceptée qu'aux conditions et aux spécifications techniques en vigueur au jour de la réception de celle-ci.